



Summer 2009
Volume 13
Issue 2

MISSOURI ENVIRONMENTAL EDUCATION ASSOCIATION

The MEEA Newsletter is published quarterly by the **Missouri Environmental Education Association**

Comments or Questions may be directed to Jan Weaver, 208 Tucker Hall, MU, Columbia MO 65211 or weaverjc@missouri.edu

Contents

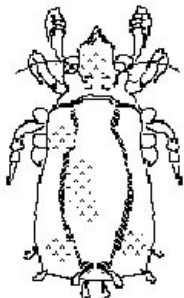
- 1 President's View
- 2 Missouri Envirothon Champion, Call for MEEA Award Nominations
- 3 Professional Development
- 6 Grants & Awards
- 7 Events Calendar
- 8 Jobs
- 9 Board News

President's View: Jenna Rhodes - 2009 MEEA Board President

Greetings from your President! As you may or may not know, I am a high school science teacher in a Kansas City suburb. And the last day of school has come and gone and I am quickly overwhelmed with the many projects and classes that I want to squeeze in before school starts up again in August. I want to take a moment to acknowledge our formal teacher members and say thank you for all the hard work and countless hours of planning, teaching, and grading that you did this school year. You are an integral part of MEEA's vision of creating an environmentally literate citizenry in Missouri. And to our non formal educator members I owe huge thanks as well. You support, supplement, expand, and bring to life what formal educators begin in the classroom. You too are an essential piece of the education puzzle in Missouri. Formal educators are beginning their summers "off" (though I don't know any teachers who actually take the summer off!) and non formal educators are ramping up for a summer full of programs and events. In the midst of all that is happening at this time of year please remember to find time to just sit and relax, to smell the flowers, or listen to the wind blowing through the trees. Without this downtime we will not be fully prepared for all that is ahead of us. And there is much left to do my friends!

MEEA joined with the EE associations from Kansas (KACEE), Nebraska (NACEE), and Iowa (ICEC) to write and accept a very large EPA grant to begin work on our Environmental Literacy Plans (ELP) for each of our states. We are quickly approaching our 4 state planning summit, which will be held at the Lied Lodge in Nebraska City. Each state has put together awesome teams of people representing varied interests and organizations in our states. The purpose of the summit is to create a state-specific action plan that will facilitate the writing of the ELP in the year following the summit. So be on the look out for updates and invites for state planning meetings and mini-summits!

Our conference is coming up the 16th-18th of October at Richwood Valley Campus, Ozarks Community Technical College in Ozark, Missouri. Information and tentative schedule can be found at www.meea.org. Our theme this year is 'Outdoors in the Ozarks', which fits in perfectly with the push to get kids and adults outside into nature. Come learn with us in October!!! Also, if you have donations for the silent auction or want to toot your own horn at the ShareFair, contact Jan Weaver at weaverjc@missouri.edu for more info.



Want to know what kind of forest animal is shown in the newsletter?

Sweet summer wishes,

Jenna Rhodes
MEEA President

Visit www.meea.org

Missouri Envirothon Team Results - Nancy Snider, MEEA President Elect

Pembroke Hill H.S. in Kansas City Missouri is this year's Missouri State Envirothon Champion. The annual Envirothon competition was held on May 7 in Camdenton, and the winner will represent Missouri at the Canon Envirothon Competition on August 2-8 at the University of North Carolina in Asheville NC. Parkway North H. S. Team B from St. Louis placed second, Parkway North H. S. Team A placed third and Eureka H. S. from Eureka, placed fourth. Last year a team from Parkway North H. S. placed 2nd at the Canon Envirothon Competition.

The Canon Envirothon is a hands-on environmental problem-solving competition for high school-aged students in the United States and Canada. Participating teams complete training and testing in five natural resource categories: i.e., soils and land use, aquatic ecology, forestry, wildlife, and current environmental issues. This year the current issue was Biodiversity in a Changing World.

In Missouri teams first compete at a regional level. The top three teams from each region advance to the state competition. This year, twenty teams competed, with each team required to create and give an oral presentation before judges who are natural resource professionals.

The Canon Envirothon is North America's largest high school environmental education competition. Reaching more than 500,000 students across North America, its mission is to develop knowledgeable, skilled, and dedicated citizens who are willing and prepared to work towards achieving a balance between the quality of life and the quality of the environment.

Call for Nominees for the Annual MEEA Environmental Service Awards

Service Award to a MEEA Member: This award is presented to a MEEA member to recognize efforts to promote and provide EE leadership.

Service Award for an Organization, Agency (Public or Private) or Business: This award is presented to an organization, agency, or business that promotes EE and supports the purpose and mission of MEEA.

Community Service Award: This award is presented to a non-profit, grass-roots group (comprised of two or more individuals) to recognize the group's commitment to and success at improving the quality of community education and/or the local environment.

Outstanding Lifetime Service Award: This award is presented to an individual (MEEA member or not) to recognize his or her long-standing (20 years or more) efforts to promote and provide EE leadership in the state of Missouri.

Please visit the MEEA Who's Who link under networking for more information about the awards and a list of past recipients or go to <http://www.meea.org/eepeople.shtml>

To nominate an individual or group (organization, agency, business or grass roots group) please send a letter of recommendation outlining your reasons for support and any supporting materials (news articles, websites, brochures, etc.) to Jan Weaver, 208 Tucker, MU, Columbia MO 65211. Nomination letters and materials can also be emailed -- weaverjc@missouri.edu --- or faxed --- 573-882-0123. **Deadline is August 31, 2009.**

2009 MEEA Officers

President: Jenna Rhodes - Grandview
President Elect: Nancy Snider - St. Louis
Past President: Jill Black - Springfield
Secretary: John Sode - Lebanon
Treasurer: Anna-Lisa Tucker - Wildwood
2009 MEEA Board
Eric Arnold - Kansas City 2009 - 2010
Deb Ballin - St. Joseph - 2009 - 2010
Melvin Johnson - Springfield 2008-2009
Mike Kromrey - Springfield 2009-2010
Carol Mahan - Rolla - 2008-2009
Retha Meier - St. Louis - 2008 - 2009
Doug Miller - Jefferson City - 2009 - 2010
Norma Neely - Kirksville 2008-2009

Staff and Liasions

Communications: Jan Weaver - Columbia
Membership: Carol Harris - Jefferson City
DNR Liaison: Jim Lubbers - Jefferson City
MDC Liaison: Regina Knauer - Jefferson City

2009 Meetings (Tentative Times)

July 11-13	Board Retreat, location tbd
October 7	Members Meeting, Springfield
October 8	Board Meeting, Springfield
December	Board Meeting , Columbia

Newsletter Deadlines Aug 15, Nov 15

Professional Development Workshops

sorted first by region - NW to SE - then by date; date, title, MEEA Category -(1), (2) or (3) - location - webpage or email
MEEA Workshop Categories - Category 1: environmental education objectives; includes at least three activities; furnishes background information; supplies resources or references; incorporates a glossary; and includes an evaluation. These workshops must be approved by MEEA. **Workshops already approved for college credit are automatically approved for Category 1 Workshops.** Category 2: structured outdoor experiences. Category 3 : EE resources. Some workshops may have fees. College credit courses will have tuition fees. Some workshops have pre-registration deadlines, act quickly if you would like to attend. Additional workshops at <http://www.meea.org/profdevcalendar.shtml>. Certification Program information at <http://www.meea.org/certification.shtml>

Northwest (Cameron, St. Joseph, Maryville, Trenton)

- July 28 - Missouri Mammals (1) - Pony Express Cons Area, near Maysville in Dekalb Co - <http://mdc.mo.gov/teacher/workshops/>

Northeast (Hannibal, Kirksville, Macon, Mexico, Moberly)

- July 1 and 2 - Nature Unleashed - (1) - Conservation Department NE Regional Office, Kirksville - <http://mdc.mo.gov/teacher/workshops/>
- July 14 and 15 - Teaching Science Through Children's Literature - (1) - Conservation Department, NE Regional Office, Kirksville - <http://mdc.mo.gov/teacher/workshops/>
- July 28 - 29 - Caves: A Habitat Underground - (2 or 3) - Hannibal MDC Office - <http://mdc.mo.gov/teacher/workshops/>

Kansas City (Blue Springs, Excelsior Sprngs, Grandview, Gladstone, KC, Lee's Summit, Liberty, Sedalia, Warrensburg)

- June 6 - Urban Wildlife Issues: Beavers (2) - Discovery Ctr, KC - <http://mdc.mo.gov/areas/kcmetro/>
- June 9 - Urban Soils & Basic Tree Biology (2 or 3) - Overland Park, Kansas - <http://www.heartlandtreealliance.org/egap.php?id=87>
- June 10-11 - Discover Nature Schools: Nature Unleashed (1) - Discovery Ctr, Kansas City - <http://mdc.mo.gov/teacher/workshops/>
- June 15 - Conservation Green (1) - Discovery Center, Kansas City - <http://mdc.mo.gov/teacher/workshops/>
- June 16 - The Urban Forest (1) - Eisenhower Community Ctr, KC Kansas - <http://www.heartlandtreealliance.org/egap.php?id=87>
- June 16 - Master Naturalist Informational Meeting (1) - Burr Oak Woods, Cons Nat Ctr, Blue Springs - www.gkcmn.com
- June 18 - Industrial Materials Recycling 101 (2) - MARC offices 600 Broadway, KC from 11:30 to 2 pm, \$10 - http://www.marc.org/Sustain/Solid_Waste_and_Recycling/epa_web_academy.asp
- June 19 and 20 - Leave No Trace Trainer Workshop (1) - George Owens Nature Park, Independence - mgarrett@indepmo.org
- June 20 - Badgers and Bison (2) - Anita B. Gorman Cons Disc Ctr, KC - <http://mdc.mo.gov/areas/kcmetro/>
- June 27 - Outdoor Skills (2) - Anita B. Gorman Cons Disc Ctr, KC - <http://mdc.mo.gov/areas/kcmetro/>
- June 29, 30, July 23, 30 - Build-A-Trunk (1) - Discovery Center, Kansas City - <http://mdc.mo.gov/teacher/workshops/>
- July 8 - 9 - Discover Nature: Conserving Mo's Aquatic Ecosystem (1) - Burr Oak Woods, Cons Nat Ctr, Blue Springs - <http://mdc.mo.gov/teacher/workshops/>
- July 9 - Aquatic Education Training (1) - Burr Oak Woods Cons Nat Ctr, Blue Springs - <http://mdc.mo.gov/teacher/workshops/>
- July 11 - The Urban Forest (1) - Tomahawk Ridge, Overland Park, Kansas - <http://www.heartlandtreealliance.org/egap.php?id=87>
- July 16 - Biodegradable Plastics 101 (2) - MARC offices 600 Broadway, KC from 11:30 to 2 pm, \$10 - http://www.marc.org/Sustain/Solid_Waste_and_Recycling/epa_web_academy.asp
- July 21-22 - Discover Nature: Conserving Mo's Aquatic Ecosystem (1) - Burr Oak Woods Nat Ctr, Kansas City Area - <http://mdc.mo.gov/teacher/workshops/>
- July 30 - Nature Unleashed: Discover Nature School Training (1) - Anita B. Gorman Conservation Discovery Center, Kansas City - <http://mdc.mo.gov/teacher/workshops/>
- August 8 - Urban Soils & Basic Tree Biology (2 or 3) - Eisenhower Com Ctr, KC Kansas - <http://www.heartlandtreealliance.org/egap.php?id=87>
- August 20 - Sustainable Product Outlook (2) - MARC offices 600 Broadway, KC from 11:30 to 2 pm, \$10 - http://www.marc.org/Sustain/Solid_Waste_and_Recycling/epa_web_academy.asp
- August 22- The Urban Forest (1) - Discovery Center, KC Missouri - <http://www.heartlandtreealliance.org/egap.php?id=87>
- September 12 - Urban Soils and Basic Tree Biology (2 or 3) - Burr Oak Woods Nat Ctr, Blue Springs - <http://www.heartlandtreealliance.org/egap.php?id=87>
- September 17 - Conservation Seeds (1) - Discovery Center, Kansas City - <http://mdc.mo.gov/teacher/workshops/>
- September 17 - A Vision for A Zero Waste America (2) - MARC offices 600 Broadway, KC from 11:30 to 2 pm, \$10 - http://www.marc.org/Sustain/Solid_Waste_and_Recycling/epa_web_academy.asp
- September 25 -26 - Wonders of Wildlife Outdoor Schools (1) - Kansas City 1-800-334-6946 or wondersofwildlife.org

Central (Columbia, Rocheport, Jefferson City, Marshall)

- June 13 & 14 - 20th Anniversary Celebration of Missouri Stream Team (2) - Float the Gasconade from the "Rock Slide" to Waynesville (~ 30 mi sw of Rolla on I44), help clean up the Roubidoux- www.mostreamteacm.org or call 573-522-4115 ext 3168
- July 22 and 23 - Discover Nature in Outdoor Classrooms (1) - Jefferson City and Columbia area - <http://mdc.mo.gov/teacher/workshops/>
- June 23 - Discover Nature Women: Archery for Women (2)- Runge Conservation Nature Center - <http://www.mdc.mo.gov/areas/central/>
- August 5 and 6 - Using Children's Books to Teach Conservation - Elementary (1) - Runge Nature Center, Jefferson City - <http://mdc.mo.gov/teacher/workshops/>
- August 5 and 6 - Using Books to Teach Conservation - Intermediate (1) - Runge Nature Center, Jefferson City - <http://mdc.mo.gov/teacher/workshops/>
- September 9, 12 and 23 - Insects Across the Curriculum - Fall (1) - Runge Conservation Nature Center, Jefferson City - <http://mdc.mo.gov/teacher/workshops/>

- November 6-8 - Project WET, WILD, Learning Tree Workshops - Heit's Point Camp, Lincoln, hwy 65 about 25 miles south of Sedalia, college credit an option - email Erica Cox at EricaCox@MissouriState.edu for details or visit www.projectwet.missouristate.edu

St. Louis (St. Louis, St. Louis Co Cities, Sullivan, Washington)

- June 5 -6 - Wonders of Wildlife Outdoor Schools (1) - St. Louis 1-800-334-6946 or wondersofwildlife.org
- June 9 - 12 - Animal Artistry (1) - St. Louis Zoo - <http://www.stlzoo.org/education/forteachers/summerteacherprogram.htm>
- June 10 - 11 - Animal Math (1) - St. Louis Zoo - <http://www.stlzoo.org/education/forteachers/summerteacherprogram.htm>
- June 11 - Life Cycle of a Fern (2)- Rockwoods Reservation, Pacific - <http://www.mdc.mo.gov/areas/stlouis/>
- June 13 - Leaf and Tree ID (2) - Powder Valley Cons Nat Ctr, St. Louis Area - <http://www.mdc.mo.gov/areas/stlouis/>
- June 15 - 17 - Energy Conservation: The Power of Energy (1) - Earthways Center - <http://www.mobot.org/education/workshop.asp>
- June 15 - 19 - Mapping Your Community (1) - Litzsinger Road Ecology Center - <http://www.mobot.org/education/workshop.asp>
- June 17 - 18 - Applied Animal Genetics (1) - St. Louis Zoo - <http://www.stlzoo.org/education/forteachers/summerteacherprogram.htm>
- June 22 - 26 - Sustainable Schoolyards (1) - Litzsinger Road Ecology Center -<http://www.mobot.org/education/workshop.asp>
- June 29 - July 2 - Teaching with Plants (1) - Powder Valley Conservation Nature Center - <http://mdc.mo.gov/teacher/workshops/>
- June 29, July 2, 9, 17 - Exploring Animal Behavior (1) - St. Louis Zoo - <http://www.stlzoo.org/education/forteachers/summerteacherprogram.htm>
- June 27 - Discover Nature-Women: Basic Fishing 101 (2)- Forest Park Hatchery, St. Louis - <http://www.mdc.mo.gov/areas/stlouis/>
- June 27 - Discover Nature - Families: Canoeing (2)- Powder Valley Cons Nat Ctr - <http://www.mdc.mo.gov/areas/stlouis/>
- June 28 - Discover Nature- Women: Canoeing (2)- Powder Valley Cons Nat Ctr - <http://www.mdc.mo.gov/areas/stlouis/>
- June 29 - Teaching With Plants (1) - Powder Valley Cons Nat Ctr - <http://mdc.mo.gov/teacher/workshops/>
- July 6 - Summer Wildflowers at St. Stanislaus (2) - St. Stanislaus Cons Area, Hazelwood - <http://www.mdc.mo.gov/areas/stlouis/>
- July 7 - Nature's Niche: Reptiles of Missouri (2)- Powder Valley Cons Nat Ctr - <http://www.mdc.mo.gov/areas/stlouis/>
- July 11 - Journey Through the Seasons(1) - Shaw Nature Reserve, Gray Summit - <http://mdc.mo.gov/teacher/workshops/>
- July 13 - 17 - Introduction to St. Louis Ecology (1) - Litzsinger Road Ecology Ctr - <http://www.mobot.org/education/workshop.asp>
- July 15 - 24 - The Voyage of Learning Teacher's Academy (1) - Forest Park, St. Louis - <http://mdc.mo.gov/teacher/workshops/>
- July 21 - 24 - Nature Unleashed, Discover Nature Schools (1) - Busch Conservation Area , covering Projects WILD and PLT - <http://mdc.mo.gov/teacher/workshops/>
- July 29 - 31 - No Teacher Left Inside (1 or 2) - Dana Brown Overnight Center + 2 day float trip on the Meramec River, canoeing, camping, caving gear provided - jennifer.hope@mobot.org <http://www.mobot.org/education/workshop.asp>
- July 30 - Archery Instructor Certification (1) - Francis Howell Central HS, St. Charles - <http://mdc.mo.gov/teacher/workshops/>
- July 31 to August 1 - Project WET Facilitator Advanced Training - Johnson Shut Ins State Park, registration deadline June 19, cost \$25 (hotel is separate and on your own) - EricaCox@MissouriState.edu for details or visit www.projectwet.missouristate.edu
- August 6 and 7 - Living History at the Dana Brown Overnight Center (2 or 3) - Shaw Nature Reserve, Gray Summit - <http://mdc.mo.gov/teacher/workshops/>
- August 27 - December 10 (Thursdays) - Global Climate Change Course (1) - St. Louis Zoo Exploration Outpost, 6:00 - 8:00 Thursday evenings - University Missouri St. Louis - non credit \$295, additional fees for 2 hours undergraduate or graduate credit - <https://apps.umsi.edu/webapps/CE/register.cfm?prog=9484&fy=2010>
- September 12 - Conserving Missouri's Aquatic Ecosystems: A Discover Nature- Schools Program - (1) - Shaw Nature Reserve, Gray Summit - <http://mdc.mo.gov/teacher/workshops/>
- September 19 - Wonders of Wetlands - (1) - Shaw Nature Reserve, Gray Summit - <http://mdc.mo.gov/teacher/workshops/>
- September 22 - Discover Nature - Schools - (3) - Caldwell Memorial WA, Washington - <http://mdc.mo.gov/teacher/workshops/>

Southwest (Bolivar, Branson, Carthage, Joplin, Lebanon, Marshfield, Monett, Nixa, Ozark, Springfield)

- June 2 - Medicinal and Edible Plants of the Ozarks (2)- Springfield Cons Nat Ctr - <http://www.mdc.mo.gov/areas/swest/>
- June 2 - Discover Nature- Women: Basic Canoeing and Fishing (2)- Springfield Cons Nat Ctr - <http://www.mdc.mo.gov/areas/swest/>
- June 7 - Primitive Skills Series: Fire and Firestone (2) - Springfield Cons Nat Ctr - <http://www.mdc.mo.gov/areas/swest/>
- June 12 - Discover Nature - Families: Beginning Camping (2) - Springfield Cons Nat Ctr - <http://www.mdc.mo.gov/areas/swest/>
- June 13 - Project WILD and More (1) - Conservation Department SW Regional Office, Springfield - <http://mdc.mo.gov/teacher/workshops/>
- June 17 - Summer Hummers (2) - Springfield Cons Nat Ctr - <http://www.mdc.mo.gov/areas/swest/>
- June 17 - Introduction to Canoeing (2) - Kellog Lake Park, Carthage - <http://www.mdc.mo.gov/areas/swest/>
- June 19 - Floating Hike on Shoal Creek (2) - Wildcat Glade Cons and Audubon Ctr, Joplin - <http://www.mdc.mo.gov/areas/swest/>
- June 19 and 20 - Conservation and Early Childhood (1) - Conservation Department SW Regional Office, Springfield - <http://mdc.mo.gov/teacher/workshops/>
- June 20 - Cable Restraint Course (2) - Springfield Nat Cons Ctr - <http://www.mdc.mo.gov/areas/swest/>
- July 24 and 25 - Field Aquatics for Teachers (1) - Conservation Department SW Regional Office, Springfield - <http://mdc.mo.gov/teacher/workshops/>
- July 31 and August 1 - Entertaining Entomology (1)- Bull Shoals Field Station, se of Branson - <http://mdc.mo.gov/teacher/workshops/>
- October 9-10 - Wonders of Wildlife Outdoor Schools (1) - Roaring River State Park1-800-334-6946 or wondersofwildlife.org

Ozark (Cabool, Huston, Mountain Grove, Rolla, Saint James, Salem, Waynesville, West Plains, Willow Springs, Winona)

- June 13 & 14 - 20th Anniversary Celebration of Missouri Stream Team (2) - Float the Gasconade from the "Rock Slide" to Waynesville (~ 30 mi sw of Rolla on I44), help clean up the Roubidoux- www.mostreamteam.org or call 573-522-4115 ext 3168
- June 16 - Growing, Growing Green with Project Learning Tree (1) - Duck Creek CA - <http://mdc.mo.gov/teacher/workshops/>
- June 16, 18, 23 and 25 - Outside a Classroom and Inside a Book - (1) - Success Elementary School, Success, Texas Co. - <http://mdc.mo.gov/teacher/workshops/>
- June 19 to 21 - Migration Sensation: Missouri Songbirds (1) - Twin Pines Cons Ed Ctr, Winona - <http://mdc.mo.gov/teacher/workshops/>
- June 30 to July 3 - Along the Trail: An Exploration of the Ozarks (1) - Montauk State Park, Salem - <http://mdc.mo.gov/teacher/workshops/>
- July 7 to 9 - Teachers in the Wild (1) - Cedar Stone Lodge, Eminence - <http://mdc.mo.gov/teacher/workshops/>
- July 29 - Back to School Bash (3) - Bray Conservation Area, w of Rolla - <http://mdc.mo.gov/teacher/workshops/>
- July 31 to August 1 - Project WET Facilitator Advanced Training (1) - Johnson Shut Ins State Park, registration deadline June 19, cost \$25 (hotel is separate and on your own) - EricaCox@MissouriState.edu or www.projectwet.missouristate.edu
- September 19 - Discover Nature with Young Children - (1) - Bray Conservation Area, w of Rolla - <http://mdc.mo.gov/teacher/workshops/>

Southeast (Cape Girardeau, Doniphan, Farmington, Hayti, Ironton, Jackson, Kennet, New Madrid, Poplar Bluff, Sikeston)

- June 2 - Camping 101 (2) - Cape Girardeau Nature Center - <http://www.mdc.mo.gov/areas/cnc/cape/> call 573-290-5218 to register
- June 5 - Camping 102(2) - Trail of Tears State Park - <http://www.mdc.mo.gov/areas/cnc/cape/> call 573-290-5218 to register
- June 19 and 20 - Growing, Growing Green With Project Learning Tree (1) - Duck Creek Conservation Area - <http://mdc.mo.gov/teacher/workshops/>
- July 14 to 16 - Well Water, Cave Life and the Human Connection (1) - Conservation Department SE Regional Office, Cape Girardeau - <http://mdc.mo.gov/teacher/workshops/>
- June 17 - Underground Exploration (2) - Cape Girardeau Nature Center - <http://www.mdc.mo.gov/areas/cnc/cape/> call 573-290-5218 to register July 28 to 30 - Terrestrial Animals: Feathers, Scales and Fur - (1) - Otter Slough Conservation Area, sw of Dexter in Stoddard Co. - <http://mdc.mo.gov/teacher/workshops/>
- July 12 - Surviving the Outdoors (2) - Cape Girardeau Nature Center - <http://www.mdc.mo.gov/areas/cnc/cape/> call 573-290-5218 to register
- July 31 to August 1 - Project WET Facilitator Advanced Training - Johnson Shut Ins State Park, registration deadline June 19, cost \$25 (hotel is separate and on your own) - email Erica Cox at EricaCox@MissouriState.edu for details or visit www.projectwet.missouristate.edu
- October 2 and 3 - Wild Answers for Wild Puzzles - (1) - Cape Girardeau Nature Center - <http://mdc.mo.gov/teacher/workshops/>

Statewide

- June 13 & 14 - 20th Anniversary Celebration of Missouri Stream Team (2) - Float the Gasconade from the "Rock Slide" to Waynesville (~ 30 mi sw of Rolla on I44), help clean up the Roubidoux - www.mostreamteam.org or call 573-522-4115 ext 3168
- June 21 to July 1 - Ozark Field Studies: Curriculum and Lesson Plans for the Social Studies (1) - centered in Springfield - http://www.ngsednet.org/community/workshops.cfm?community_id=424
- July 31 to August 1 - Project WET Facilitator Advanced Training - Johnson Shut Ins State Park, registration deadline June 19, cost \$25 (hotel is separate and on your own) - EricaCox@MissouriState.edu for details or www.projectwet.missouristate.edu
- September 12 - 19 - River Camp '09 (2) - locations throughout Mid-Missouri - <http://www.riverrelief.org/upcoming/>
- November 6-8 - Project WET, WILD, Learning Tree Workshops - Heit's Point Camp, Lincoln, hwy 65 about 25 miles south of Sedalia, college credit an option - EricaCox@MissouriState.edu for details or www.projectwet.missouristate.edu

National

- Continuous - Habitable Planet Course - (1) - online from the Harvard Smithsonian Center for Astrophysics and the Harvard University Center for the Environment - 13 half-hour streaming video programs, online text, professional development guide, and a Web site. Graduate credit is available from participating institutions. All online materials are free of charge and hard copies of materials are available at nominal cost. <http://www.learner.org/resources/series209.html>
- June 22 to 26 - Grandfather Mountain International Workshop (1) Western North Carolina - Join educators from U.S., Finland and Brazil for a week of educational discovery in the environmentally rich setting of western North Carolina. Develop "green" hands-on, inquiry-based activities! North Carolina State University, Lees-McRae College. Contact Dr. Harriett Stubbs www.ncsu.edu/scilink
- July 12 - 17 - Trees of the Eastern Temperate Forest - Arc of the Appalachia Preserve System in southern Ohio - a tree recognition, forest succession and reading-the-forest course - <http://www.highlandssanctuary.org/WE/tree.course.htm>
- July 26 to August 8 - Adventures in Ecology and Education (2 and/or 3) - Brazil - Join U.S. and Brazilian educators and environmental scientists! Study the educational and unique ecosystems of Brazil. One week in Sao Paulo, the economic center, city of 18 million. One week in either the Pantanal, the world's largest wetland OR the Amazon, the world's largest rain forest. North Carolina State University and Sangari Institute, Sao Paulo, Brazil. . Contact Dr. Harriett Stubbs www.ncsu.edu/scilink
- August 16 - 21 - Living Rivers, Arteries of the Eastern Forest (1 or 2) - Arc of Appalachai Preserve System, southern Ohio - Experts in botany, mussels, crayfish, fish and salamanders will lead the course - <http://www.highlandssanctuary.org/WE/Waterways/waterways.htm>
- Fall Semester 2009 - Leadership Development in Natural Resources: Strategic Planning and Implementation (SPI) - (1) - online through Environmental Education and Training Partnership - 9-week course on developing successful strategic planning and implementation models, processes, and techniques. Emphasis will be placed on managing the strategic planning process to build the capacity of organizations to provide effective environmental education programs -Scholarships available. <http://www.uwsp.edu/natres/eetap/index.aspx>

Grants, Awards, Scholarships and Other Opportunities

- **Classroom Earth Professional Development Grants.** *June 12, 2009.* Grant winners will take two online graduate courses during the 2009-2010 school year: "Fundamentals of Environmental Education (EE)" and "Making EE Relevant to Culturally Diverse Audiences." Graduate credit may apply. <http://www.classroomearth.org/professional-development-grant-2009>
- **NAAEE Scholarships.** *June 12, 2009.* Affordability Scholarship to provide discounted full conference registration to NAAEE members who have lower incomes and little or no financial support (not students and retirees). Diversity Scholarship to promote diversity. William B. Stapp College Student Scholarship. <http://www.naaee.org/conference/scholarships>
- **Society for Environmental Toxicology and Chemistry Environmental Education Award.** *June 30, 2009.* \$1000. An individual, group, organization or corporation for a significant contribution to environmental education by educating educators or by working with community groups and K-12 programs that enhance environmental literacy in youth or public. <http://www.setac.org/node/69>
- **Monsanto Fund.** *July 1, 2009.* 501 (c) (3), H.R. 4 Compliance and audit. Average grant \$22,000, range \$250-\$1,200,000. For projects in St. Louis area or seed manufacturing areas and programs focusing on healthy environments which conserve and protect special places and teach children and families how to value them. <http://www.monsantofund.org/asp/FAQ/FAQ.asp>
- **National Gardening Association Youth Garden Grants.** *October 15, 2009.* 5 \$1000 awards (gift cards), 70 \$500 awards (gift cards), 50 \$250 awards (gift cards). For schools, youth groups, community centers, camps, clubs, treatment facilities and intergenerational groups. Applicants must plan to garden in 2009 with at least 15 children 3 to 18 years. <http://assoc.garden.org/grants/>
- **Project Learning Tree GreenWorks Grants.** *October 31, 2009.* \$250 to \$1,000. For PLT trained educators and their students in the local community for learning-by-doing projects involving student leadership, service-learning, and community participation. Community partner and 50% matching funds required. http://www.plt.org/cms/pages/21_22_21.html
- **Project Learning Tree GreenWorks Grants.** *October 31, 2009.* \$1000 to \$5,000. For PLT trained educators and their students in the local community for learning-by-doing projects involving student leadership, service-learning, and community participation. Multiple community partners and/or large number of students, 50% matching funds, and PLT workshop for school staff required. http://www.plt.org/cms/pages/21_22_21.html
- **Target Field Trip Grants.** *November 2009* (Applications open August 2009). \$2.2 million for 5,000 no strings field trip grants in 2008 (88 went to Missouri teachers). <http://sites.target.com> then go to about target, then to the company, then to community outreach, then to grants
- **Monsanto Fund.** *January 1, 2010.* 501 (c) (3), H.R. 4 Compliance and audit. Average grant \$22,000, range \$250-\$1,200,000. For projects in St. Louis area or seed manufacturing areas and programs focusing on healthy environments which conserve and protect special places and teach children and families how to value them. <http://www.monsantofund.org/asp/FAQ/FAQ.asp>

Rolling or Multiple Deadlines

- **Anheuser Busch.** *Rolling Deadline.* 501 (c) (3) organizations in AB communities. \$15,000-\$1,000,000. Environmental conservation and education Audit and annual report required. <http://www.anheuser-busch.com/grantGuidelines.html>
- **Boeing.** *Rolling Deadline.* Schools and 501 (c) (3) organizations. \$5,000 - \$375,000. Programs that protect and conserve the natural environment - acquisition and restoration, protecting natural assets, restoring or improving habitat, training citizens to protect habitat. http://www.boeing.com/companyoffices/aboutus/community/np_seek_sup.html
- **Captain Planet.** *Deadlines 3/31; 6/30; 9/30; 12/31.* Schools and 501 (c) (3)s. Range \$250 to \$2500. Hands-on, environmental understanding, interaction and group cooperation, planning and problem solving, 6-18 years. Reporting requirements. <http://captainplanetfoundation.org/default.aspx?pid=3&tab=apply>
- **Lowe's Community Improvement/K-12 Public School Initiative.** *Rolling Deadline, but 8-10 week lead time advised.* 501 (c) (3) organizations, schools, religious organizations. Community beautification, renovation of schools (minor) or public buildings, landscaping, parks, playgrounds, outdoor learning environments, Small requests should be directed to the local store. Apply for grants of \$5,000 - \$25,000 at www.lowes.com/lowes/lkn?action=pg&p>AboutLoves/Community
- **NEA Student Achievement Grants.** *Applications reviewed February 1, June 1, October 15.* Public school K-12 or College/University teachers or support staff. \$5,000 Grants to improve the academic achievement of students in U.S. public schools and public higher education institutions in any subject area(s). The proposed work should engage students in critical thinking and problem solving that deepen their knowledge of standards-based subject matter. The work should also improve students' habits of inquiry, self-directed learning, and critical reflection. Proposals for work resulting in low-income and minority student success with honors, advanced placement, or other challenging curricula are particularly encouraged. Grant funds may be used for resource materials, supplies, equipment, transportation, software, or scholars-in-residence Notification dates: for February 1 > April 15, for June 1 > September 15, for October 15 > January 15 http://neafoundation.org/programs/StudentAchievement_Guidelines.htm
- **NEA Learning and Leadership Grants.** *Applications reviewed February 1, June 1 and October 15.* Public school K-12 or College/University teachers or support staff. \$2,000 for individuals and \$5,000 for groups to fund participation by individuals in high-quality professional development experiences or summer institutes and to groups to fund collegial study, action research, or mentoring experiences. http://neafoundation.org/programs/Learning&Leadership_Guidelines.htm
- **Toshiba America Foundation.** *Rolling Deadline.* Grades 7-12 Teachers. Under \$5,000. Inquiry based projects designed by teachers and teacher teams for use in the classroom. <http://www.toshiba.com/tafpub/jsp/home/default.jsp>
- **WalMart Community and Education Grants.** *Rolling Deadline, but minimum 6 month lead time advised.* 501 (c) (3) organizations, schools, religious organizations and government agencies. All requests for funding must be directed to the Good Works Coordinator at your local Wal-Mart store, SAM'S CLUB, Neighborhood Market or Distribution Center.

For other resources, visit **EE Link** - <http://eelink.net/grants-generalinformation.html> or **Grant Wrangler** <http://www.grantwrangler.com/index.html>

Calendar of EE Events

Regional (NW to SE) - more events at <http://www.meea.org/events.html>

Northwest (Cameron, St. Joseph, Maryville, Trenton)

- June 20 - Day at the Range and Outdoor Adventure Fair - Andy Dalton Shooting Range, Bois D'Arc, Springfield Area - <http://mdc.mo.gov/areas/nwest/>
- ----Missouri Department of Conservation Northwest Region events <http://mdc.mo.gov/areas/nwest/>

Northeast (Hannibal, Kirksville, Macon, Mexico, Moberly)

- ----Missouri Department of Conservation Northeast Region events <http://mdc.mo.gov/areas/neast/>

Kansas City (Blue Springs, Excelsior Springs, Grandview, Gladstone, KC, Lee's Summit, Liberty, Sedalia, Warrensburg)

- June 9 - Rain Barrel Workshop - 3 Trails Community Recycling Center, 91st and Hillcrest Road, KC, 7:00 pm - <http://www.bridgingthegap.org/egap.php?id=116>
- June 9 & 10 - Family Fishing - Prairie Hollow Lake, J. A. Reed Wildlife Area, Lee's Summit - <http://mdc.mo.gov/areas/kcmetro/>
- June 16 - Master Naturalist Informational Meeting - Burr Oak Woods, Conservation Nature Center, Blue Springs - www.gkcmn.com or call Stacey Davis at 816-228-3766
- June 17 - Summer Dayz - Anita B. Gorman Cons Disc Ctr, KC - <http://mdc.mo.gov/areas/kcmetro/>
- June 18- Rain Barrel Workshop - 3 Trails Community Recycling Center, 91st and Hillcrest Road, KC, 7:00 pm - <http://www.bridgingthegap.org/egap.php?id=116>
- June 26 - Green Workforce Development - Johnson County Community College, 8 am to noon, \$20 regular, \$10 students, free EEBN members - <http://www.bridgingthegap.org/egap.php?id=116>
- July 5 - Wildflowers and Habitats - Burr Oak Woods, Conservation Nature Center, Blue Springs - registration required: 816-228-3766, <http://mdc.mo.gov/areas/cnc/burroak/>
- July 12 - Prairie Hike - Burr Oak Woods, Conservation Nature Center, Blue Springs - registration required: 816-228-3766, <http://mdc.mo.gov/areas/cnc/burroak/>
- July 14- Rain Barrel Workshop - Lee's Summit, 7:00 pm - <http://www.bridgingthegap.org/egap.php?id=116>
- July 15 - Rain Barrel Workshop - 3 Trails Community Recycling Center, 91st and Hillcrest Road, KC, 7:00 pm - <http://www.bridgingthegap.org/egap.php?id=116>
- July 19 - Glade Hike and Slide Show - Burr Oak Woods, Conservation Nature Center, Blue Springs - registration required: 816-228-3766, <http://mdc.mo.gov/areas/cnc/burroak/>
- July 25 - Discover Nature Women: Prairie Gifts - Burr Oak Woods, Conservation Nature Center, Blue Springs - registration required: 816-228-3766, <http://mdc.mo.gov/areas/cnc/burroak/>
- July 26 - Woodland Hike - Burr Oak Woods, Conservation Nature Center, Blue Springs - registration required: 816-228-3766, <http://mdc.mo.gov/areas/cnc/burroak/>
- July 31 - The Magic of Fireflies - Burr Oak Woods, Conservation Nature Center, Blue Springs - registration required: 816-228-3766, <http://mdc.mo.gov/areas/cnc/burroak/>
- August 19 - Rain Barrel Workshop - 3 Trails Community Recycling Center, 91st and Hillcrest Road, KC, 7:00 pm - <http://www.bridgingthegap.org/egap.php?id=116>
- October 2 to 3 - Kansas City Clean-up and Learning Festival - Oct 2, students from around the KC area can learn on the banks of the river, Oct 3, major urban clean up - <http://www.riverrelief.org/events/index.html>
- ----Third Thursdays - Green Drinks (you need not drink alcohol to attend) - greendrinkskc@communitymail.net
- ----Missouri Department of Conservation KC Region events - <http://mdc.mo.gov/areas/kcmetro/>
- ----Powell Gardens events - <http://www.powellgardens.org/default.asp?page=Calendar>
- ----Burr Oak Woods Conservation Nature Center "Go Wild" programs for children 3-5, 6-8, 9-11 or 12-18 <http://mdc.mo.gov/areas/cnc/burroak/>

Central (Columbia, Rocheport, Jefferson City, Marshall)

- June 6 - "Reel" Time with Kids - Bass Pro Shop, Columbia Area - <http://www.mdc.mo.gov/areas/central/>
- June 13 & 14 - 20th Anniversary Celebration of Missouri Stream Team - Float the Gasconade from the "Rock Slide" to Waynesville (~ 30 mi sw of Rolla on I44), help clean up the Roubidoux, BBQ, Music, Camping and after dark, a preview of the new Stream Team movie, on Sunday, Learning Stations on crayfish, fly fishing, mussels, etc. - www.mostreamteam.org or call 573-522-4115 ext 3168
- September 19 - Jefferson City Clean-up '09 - Noren Access, North Jefferson City - <http://www.riverrelief.org/upcoming/> September 12 to 19 - Mid - Missouri River Camp - a week long series of learning events ending with a massive one day clean-up in Jefferson City, celebrating 20 years of the Stream Team Program - <http://www.riverrelief.org/events/index.html>
- ----Missouri Department of Conservation Central Region events - <http://mdc.mo.gov/areas/central/>

St. Louis (St. Louis, St. Louis Co Cities, Sullivan, Washington)

- June 10 - Bugs 101 - August A. Busch Cons Area - <http://www.mdc.mo.gov/areas/stlouis/>
- June 20 - Soulard Earth Festival - Soulard Park, 8th and Lafayette Avenue
- June 22 - 28 - National Pollinator Week at the St. Louis Zoo - Zoo Insectarium
- June 23 - Pollinator Dinner - St. Louis Zoo, \$29.95 adult, \$20 children 12 and under - 314-646-4857 to make a reservation
- June 27 - Buzz About Bees - St. Louis Zoo Missouri Meadow - www.stlzoo.org/education or call 314-646-4544
- August 22 - Operation Clean Stream - Meramec River - many sites to choose from - <http://www.riverrelief.org/events/index.html>
- ----Ameren UE Pure Power Events <http://www.ameren.com/purepower/>

Southwest (Bolivar, Branson, Carthage, Joplin, Lebanon, Marshfield, Monett, Nixa, Ozark, Springfield)

- June 6 - Family Fishing Fair - Shepard of the Hills Fish Hatchery, Branson - <http://www.mdc.mo.gov/areas/swest/>
- June 13 - James River Rescue - James and Finley River sections - <http://www.jrbp.missouristate.edu/events.html>
- June 19, 20 - Day at the Range and Outdoor Adventure Fair - Andy Dalton Shooting Range, Bois D'Arc, Springfield Area - <http://www.mdc.mo.gov/areas/swest/>

Ozark (Cabool, Huston, Mountain Grove, Rolla, Saint James, Salem, Waynesville, West Plains, Willow Springs, Winona)

- June 13 & 14 - 20th Anniversary Celebration of Missouri Stream Team - Float the Gasconade from the "Rock Slide" to Waynesville (~ 30 mi sw of Rolla on I44), help clean up the Roubidoux, - www.mostreamteam.org or call 573-522-4115 ext 3168
- June 16 - Woodland Chirps and Chatters -MDC Ozark Regional Office, West Plains - <http://mdc.mo.gov/teacher/workshops/>

Southeast (Cape Girardeau, Farmington, Poplar Bluff, Sikeston)

- June 2-Camping 101 - Cape Girardeau Cons Nat Ctr <http://www.mdc.mo.gov/areas/cnc/cape/>
- June 5 - 6 - Camping 102 -Trail of Tears State Park - <http://www.mdc.mo.gov/areas/cnc/cape/>
- June 9 - Fishing with Family- Cape Girardeau Cons Nat Ctr - <http://www.mdc.mo.gov/areas/cnc/cape/>
- June 17 - Underground Exploration - Cape Girardeau Cons Nat Ctr -<http://www.mdc.mo.gov/areas/cnc/cape/>
- June 20 - Conservation Trails -Trail of Tears State Park - <http://www.mdc.mo.gov/areas/cnc/cape/>
- June 27 - Terrific Trees Discovery Station - Cape Girardeau Cons Nat Ctr- <http://www.mdc.mo.gov/areas/cnc/cape/>
- June 28 -Discovery Hike -Millstream Gardens - <http://www.mdc.mo.gov/areas/cnc/cape/>
- July 11 - Conservation Trails - Silver Mines & Millstream Gardens - <http://www.mdc.mo.gov/areas/cnc/cape/>
- July 12 - Surviving the Outdoors - Cape Girardeau Conservation Nature Center - <http://www.mdc.mo.gov/areas/cnc/cape/>
- July 24 - Insect Mania - Cape Girardeau Conservation Nature Center- <http://www.mdc.mo.gov/areas/cnc/cape/>
- August 22 - Hummingbird Celebration - Cape Girardeau Conservation Nature Center - <http://www.mdc.mo.gov/areas/cnc/cape/>

Statewide

- June 7-10 - Missouri Recycling Assoc Conf - St. Louis Sheraton - <http://www.mora.org/index.php/conference/>
- August 4- 8 - Missouri River 340 Race - Kansas City to St. Charles - <http://www.riverrelief.org/events/index.html>
- September 12 to 19 - Mid - Missouri River Camp - Jefferson City, <http://www.riverrelief.org/events/index.html>
- October 14 to 17 - Midwest Environmental Education Conference - Champaign Urbana, "I" Hotel and Conference Center theme: Climbing the Green Wall with strands focusing on Administration, Interpretation, Natural History and Sustainability. www.eeai.net
- October 16 to 18 - Missouri Environmental Education Conference - Ozark Technical Community College, Ozark - Theme: Outdoors in the Ozarks www.meea.org/moeconference.shtml

National

- August 2 - 8 - Canon 2009 Envirothon - Asheville North Carolina - Topic - Biodiversity http://www.envirothon.org/index.php?option=com_content&task=view&id=83&Itemid=34
- October 7 - 10 - NAAEE 2009 Conference: The Power of Partnerships - Portland Oregon - <http://www.naaee.org/conference>
- October 14 to 17 - Midwest Environmental Education Conference - Champaign Urbana, "I" Hotel and Conference Center - proposal deadline April 1, 2009, theme: Climbing the Green Wall with strands focusing on Administration, Interpretation, Natural History and Sustainability. www.eeai.net
- October 16 to 18 - Missouri Environmental Education Conference - Ozark Technical Community College, Ozark - www.meea.org/moeconference.shtml

EE Jobs in the Missouri Area (descriptions are edited to conserve space!)

Education Specialist - Library and Environmental Center, KC Public Libraries. Deadline 6-15-2009: Located in the beautiful surroundings of Wyandotte County Lake Park, the Library and Environmental Center staff offer access to environmental library materials, education and technology programs to preschool through college level students, and the general public. Bachelor's degree with emphasis on Sciences and/or Environmental Sciences preferred. Proven ability to work closely with community and school groups necessary. Ability to use Microsoft Applications such as Word, Excel, Power Point, and Publisher to create presentations, flyers and pamphlets to promote library programs preferred. Salary range: \$28,500-\$52,000 depending on qualifications. Health, Dental and Vision for employee and family; Group Term life; Salary Protection; Tax Deferred Annuity; Flexible Spending Account and the Kansas Public Employees Retirement System (KPERs). Cover letter, resume and 3 professional references are a requirement of the application process. Contact Person: Tammy Sharp. Phone: (913) 279-2256. E-Mail: tsharp@kckpl.lib.ks.us Mailing Address: 625 Minnesota Ave. Kansas City, KS 66101

Campus Organizers: Public Interest Research Group: Develop educational programs to teach citizenship skills and inform the campus community about important public interest issues. Recent college graduates earn \$23,750 in their first year on staff. In addition, full-time staff can opt into our state health care coverage, are eligible for paid sick and vacation days, and can apply for our college loan assistance program. Our staff accrue two weeks of vacation by the end of their first year and three weeks by the end of their second year. Staff are also eligible to join our 401(k) program in their second year. To read more and apply online, <http://www.pirg.org/jobs/positions/show/1>. Or, e-mail your cover letter and resume to Sarah Bennett at hiring@pirg.org.

Temporary Part-Time Naturalist at Powder Valley Conservation Nature Center: The Part-Time Naturalist conducts interpretive programs both on- and off-site on a wide range of natural history and conservation topics for a diverse audience of MDC stakeholders. Qualifications: Bachelor's Degree in Interpretation, Biological Sciences, or related subjects, with one year interpretation and/or teaching experience. National Association of Interpreters Certification is desired. The selected individual must have a flexible schedule, be able to present weekday, evening and weekend programs, as well as work in a variety of weather conditions. Salary: \$11.78/hour. This position is an 800-hour "year-round" position, with an average of 60 hours per month. Actual hours will fluctuate with seasons and program schedules. Contact Amy L. Anderson, (314) 301-1506 Ext.2231 Amy.Anderson@mdc.mo.gov

Urban Watershed Conservationist, Hinkson Watershed: Boone Co Planning and Building Department. Responsibilities: Primary person responsible for achieving the objectives of the grant funded project *Hinkson Creek Watershed Restoration Phase II*; promotes the conservation of water quality in the urban and rural environment through interaction with government officials, various committees and boards, developers, public conservation groups and others. Full-time; Benefited; Approximately 2.5 years remaining in a grant funded position. Qualifications: Bachelor's degree in Fisheries, Forestry, Wildlife Management, Environmental Planning, Biological Sciences, or applicable field of study; three years of progressively responsible professional service; or the equivalent combination of education and experience; *experience in hydrology and/or watershed planning is highly desirable*; proficiency in common computer applications such as Word, Excel, PowerPoint and ESRI products desired; public speaking and strong oral and written communication skills are required. Annual Salary Range: \$34,981.00 - \$43,726.00. Deadline for Application: Applications will be accepted until the position is filled. Visit <http://www.showmeboone.com/HR/> for a complete job description.

Environmental Coordinator: Platte County Planning and Zoning Department: Platte County is seeking qualified candidates for the position of Environmental Coordinator. The position will be charged with implementing the Environmental and Sustainability goals outlined in the recently adopted Platte Profile Master Plan. The position will coordinate with various County Departments, State, and Federal Agencies on issues relating to air and water quality, and solid waste management. Duties will include, coordinating and implementing environmental and sustainability policies and programs, grant writing, conducting public meetings, and other related tasks. The position will also perform general County public outreach and communication activities. The position must have excellent writing and communication skills. Combination of education and experience equivalent to Bachelor's degree in Environmental Studies, Community Planning, Public Administration, Public Relations, Communications or other related field. All qualified candidates must demonstrate general experience or expertise in environmental related issues. Send resumes to Platte County Human Resources Department, Attn.: Environmental Coordinator Position, 415 Third Street, Platte City, MO 64079 by July 12th, 2009. EOE

Remington Nature Center Executive Manager, St Joseph: Closing Date: Friday, April 17, 2009 by 5:00p.m., will remain open until filled (still posted June 1) Responsible for the overall growth, operation and success both functionally and financially of the Remington Nature Center of St. Joseph. Bachelor's Degree in Business Administration, Biological/Natural Sciences, History, Museum/Nature Center Administration or such other field of study that would allow the applicant to succeed in this capacity. Advanced degree helpful, but not required. Minimum ten year's management or executive level experience with demonstrated success in achieving organizational goals. Visit <http://www.stjoemo.info/hr/openings.cfm> for a detailed description of the position.

Climate Campaign Roving Organizer/Central Region: Sierra Club. Carries out the strategies and activities for assigned climate campaigns and programs in assigned targets and region. The Climate Campaign Roving Organizer coordinates an innovative, grass-roots, grass-tops, media and broad coalition effort on climate issues in key districts as assigned and in the region. Travels extensively to key target districts for intensive short term campaign activities designed to move key targets. Knowledge and Skills: B.A./B.S. degree in Environmental Studies, Political Science or a closely related field. 1-2 years' experience in the environmental field that includes research and organizing campaigns, press relations and public speaking. Valid driver's license, satisfactory driving record, and proof of auto insurance required. Good written and oral communication skills. Prior experience and ability writing training and information materials. Prior experience and knowledge of the legislative process. Demonstrated ability and effectiveness working with volunteers. Able to travel frequently. Please send cover letter and resume to: resumes@sierraclub.org To ensure proper routing of your application, please specify job code: Climate Campaign Roving Organizer/Central Region –SCAR in the subject line. Please do not add or modify anything else beside job code in the subject line. Sierra Club offers competitive salary package commensurate with skills and experience plus excellent benefits that include medical / dental / vision coverage, and a retirement savings 401(k) plan

Find information on other jobs at <http://www.meea.org/eejobs.shtml>

MEEA Board News - Upcoming Meeting July 11-13, Location TBA

meea Membership Application

New or Renewing Member of NAAEE? Y N

Professional \$30 Family \$45

Student/Retiree \$20 Organization \$100

Name _____

Affiliation _____

Street/P.O. Box _____

City _____ County _____

State _____ Zip _____

Email _____

Phone (h / w) _____

Date _____

Please include a check or money order made payable to MEEA and return to MEEA P.O. Box 104505 Jefferson City MO 65110-4505

Our Organizational Members

- ◆ AbitibiBowater St. Louis
- ◆ AbitibiBowater Kansas City
- ◆ Choose Environmental Excellence
- ◆ Earth Share of Missouri
- ◆ Maryville University
- ◆ Missouri Department of Conservation
- ◆ Missouri Department of Natural Resources
- ◆ University of Missouri Environmental Studies
- ◆ *Watershed Committee of the Ozarks*

Summer 2009 Contents

- 1 President's View
- 2 Missouri Envirothon Champion, Call for MEEA Award Nominations
- 3 Professional Development
- 6 Grants & Awards
- 7 Events Calendar
- 8 Jobs
- 9 Board News



P.O. Box 104505
Jefferson City MO 65110-4505

MEEA Vision

An environmentally responsible citizenry in Missouri

MEEA Mission

Advance environmental education in Missouri by providing innovative professional development and networking opportunities for those who share our mission

MEEA Value

Connecting people, ideas and resources throughout Missouri

Summer 2009 Issue